



Pet Aftercare Options • Memorialization Ideas • Pet Loss Support  
Complete pet funeral home services, burial and cremation

*Family owned and operated since 1998*

2021



## The Rainbow Bridge

Just this side of heaven is a place called Rainbow Bridge.

When an animal dies that has been especially close to someone here, that pet goes to Rainbow Bridge. There are meadows and hills for all of our special friends so they can run and play together. There is plenty of food, water and sunshine, and our friends are warm and comfortable.

All the animals who had been ill and old are restored to health and vigor. Those who were hurt or maimed are made whole and strong again, just as we remember them in our dreams of days and times gone by. The animals are happy and content, except for one small thing; they each miss someone very special to them, who had to be left behind.

They all run and play together, but the day comes when one suddenly stops and looks into the distance. His bright eyes are intent. His eager body quivers. Suddenly he begins to run from the group, flying over the green grass, his legs carrying him faster and faster.

You have been spotted, and when you and your special friend finally meet, you cling together in joyous reunion, never to be parted again. The happy kisses rain upon your face; your hands again caress the beloved head, and you look once more into the trusting eyes of your pet, so long gone from your life but never absent from your heart.

Then you cross Rainbow Bridge together....

Author unknown

# Our Mission

Pet Meadow provides caring and compassionate pet aftercare services for families in need.

Saying goodbye to a special member of the family can be overwhelming. Our specially trained staff of certified pet bereavement counselors will give you and your pet the tender loving care needed during this difficult time. You are always welcome to visit our facility. Attending services for burial or cremation can be a great opportunity to see your pet again. These services create an intimate setting for you and your family to say goodbye to your loved one.

Pet Meadow is family owned and operated. We are centrally located on six beautiful acres in Mercer County, NJ. It has been a tranquil resting place for pets for over 100 years. Because we are a deeded pet cemetery the pets who are interred here will never be disturbed.

Pet Meadow is a member of the International Association of Pet Cemeteries and Crematories. This organization works vigorously to maintain the highest standards in the profession and follows a strict code of ethics which has been laid out by their board of directors. Debra Bjorling, the owner of Pet Meadow, is on the board of the directors of this organization.



We are here to give you the care and sensitivity you need during this difficult time. We understand that the relationship you share with your pet is special and unique. We have many different options at Pet Meadow, and we will personally work with you to make sure that your pet is memorialized the way that you wish him or her to be.

## **Pet Loss Support**

Debra Bjorling is also on the board of directors of the Association for Pet Loss and Bereavement (APLB). The APLB provides resources for pet loss support, including online chat rooms facilitated by pet bereavement counselors. Visit [www.APLB.org](http://www.APLB.org) to find out more.

Pet loss grief counseling is also available from Day By Day on their 24/7 hotline (484) 453-8210, and online at [www.daybydaypetsupport.com](http://www.daybydaypetsupport.com).

# What are your options?

## Private Cremation

Each pet is privately cremated so that you receive back all of your pet and only your pet.

Your pet's cremains will be returned to you in our cherry wooden urn. If you prefer, a permanent urn can be selected from our website or by visiting the urn display at our facility.



## Attended Cremation

Your presence at the time of cremation is welcome and can be scheduled by calling our office.

**“The fact that we were able to see her one last time and witness her cremation, made this time a little more bearable. We know without a shadow of a doubt that the ashes we hold dear belong to our Gigi.” – Tina & Justin**

## Communal Cremation

Your pet is cremated simultaneously with other pets. The remains are not returned, but are gently scattered at our memorial park.

## Burial

- Formal burial of your pet is available including casket and granite marker. A deed restriction and maintenance fees ensure the continuation of the cemetery. Arrangements can be made by calling our office.
- Smaller plots are available to accommodate cremains and a granite marker. This provides a permanent resting place for your pet.

## Transportation

We will gently transport your pet from your veterinarian's office or your home to our facility.

***This body has been the faithful home of a beautiful spirit.  
Whatever your choice for the care of you pet's body, it will be  
handled with respect and dignity befitting the one who lived there.***

# Memorialization Ideas

- Chronicle your pet's life by writing a journal or by creating a photo album.
- Make something that reminds you of your pet — a drawing, sculpture, needlework project, etc.
- Volunteer your time at an animal shelter in memory of your pet.
- Your veterinarian or crematory can make a clay or ink paw print of your pet.
- An ink paw print or nose print can be used to make a charm for a necklace or bracelet.
- Keepsake jewelry can be used to hold some cremains or a lock of hair from your pet.
- Keep your pet's collar and tags — put tags on your key ring so the memory of your pet will always be with you.
- Make a special place in your home for your pet's picture and a candle. Light the candle when you think of your pet.
- Plant a tree, bush, or garden in memory of your pet.
- Attend our National Pet Memorial Day Candlelight Ceremony, always the second Sunday in September.

*Farewell master, yet not farewell.*

*Where I go, ye too, shall dwell.*

*I am gone before your face.*

*A moment's time, a little space.*

*When ye come where I have stepped,  
ye will wonder why ye wept.*

– Edwin Arnold



# Tips for Coping with Pet Loss

*Excerpts taken from "The 10 tips on coping with the loss of a pet"  
(full version available at [petmeadow.com](http://petmeadow.com))*

## **Why do I feel so much grief?**

Intense grief over the loss of a pet is normal and natural. Your pet was a significant part of your life — a source of comfort and companionship, of unconditional love and acceptance, of fun and joy. People who don't understand the pet/owner bond may not understand your pain but millions of other pet owners have gone through the same feelings.

Different people experience grief in different ways. Besides your sorrow and loss, you may also experience guilt (even if it was illness or a simple accident that led to your loss), denial that your pet is really gone, anger at yourself or others who may have been involved in the loss, or even depression.

Be honest about your feelings. Someone you loved has died, and you feel alone and bereaved. Acknowledge your feelings first, then ask yourself whether the circumstances actually justify them. Locking away grief doesn't make it go away. Cry, scream, pound the floor, talk it out. Don't try to avoid grief by not thinking about your pet. Instead, reminisce about the good times.

## **What should I tell my children?**

You are the best judge of how much information your children can handle about death and the loss of their pet. You may find that, by being honest with them about your pet's loss, you may be able to address some fears and misperceptions they have about death. If you say the pet was "put to sleep," make sure your children understand the difference between death and ordinary sleep. Never say the pet "went away," or your child may wonder what he or she did to make it leave, and wait in anguish for its return. That also makes it harder for a child to accept a new pet. Make it clear that the pet will not come back, but that it is happy and free of pain.

Never assume a child is too young or too old to grieve. Never criticize a child for tears, or tell them to "be strong" or not to feel sad. Be honest about your own sorrow. Don't try to hide it, or children may feel required to hide their grief as well.

## Will my other pets grieve?

Pets observe every change in a household, often form strong attachments to one another and are bound to notice the absence of a companion. You may need to give your surviving pets a lot of extra attention and love to help them through this period. Remember that, if you are going to introduce a new pet, your surviving pets may not accept the newcomer right away, but new bonds will grow in time.

## Should I get a new pet right away?

Generally, the answer is no. One needs time to work through grief and loss before building a relationship with a new pet. If your emotions are still in turmoil, you may resent a new pet for trying to “take the place” of the old. Children in particular may feel that loving a new pet is “disloyal” to the previous pet.

When you do get a new pet, avoid getting a “look-alike” pet, which makes comparisons all the more likely. Don’t expect your new pet to be “just like” the one you lost. Never give a new pet the same name or nickname as the old, and allow it to develop its own personality.

A new pet should be acquired because you are ready to move forward and build a new relationship, rather than looking backward and mourning your loss. When you are ready, select an animal with whom you can build another long, loving relationship because this is what having a pet is all about!

### Other Resources

The Association for Pet Loss and Bereavement provides resources for pet loss support, including online chat rooms facilitated by pet bereavement counselors. Visit [www.APLB.org](http://www.APLB.org) to find out more. Pet loss grief counseling is also available from Day By Day on their 24/7 hotline (484)453-8210, and online at [www.daybydaypetsupport.com](http://www.daybydaypetsupport.com).



# Paw Prints and Memorial Products



Basic Nose or Paw Print\*  
(5" x 7")  
\$20



Framed Ink Paw Print with  
Personalized Plaque\*  
\$50



Clay Paw Print\*  
\$35



Black Granite Portrait  
(6" x 6" or 5" x 7")  
Stand included  
\$99



River Rocks  
Small: \$69 Large: \$159  
Medium: \$109 X-Large: \$199  
Visit [petmeadow.com](http://petmeadow.com) for  
engraving limitations



Personalized Blanket  
(approx. 6' x 4.5')  
Pet photo required  
\$149

*\*Paper, frame, or kit provided may vary*

## Green Options



**Let Your Love Grow**  
*Mix with cremains for  
remembrance planting to  
create a living memorial*  
Small (up to 25 lbs.): \$60  
Medium (up to 50 lbs.): \$90  
Large (up to 75 lbs.): \$120  
X-Large (up to 150 lbs.): \$180



**Athena Himalayan Rock Salt Urns**  
*Biodegradable urns dissolve in water*  
Small (40 lbs.): \$148  
Medium (90 lbs.): \$188  
Large (200 lbs.): \$278  
Urns can hold remains up  
to weight specified.

# Forever Remembered Packages

Only available through Pet Meadow!

A personalized package to offer comfort in a time of grief.



*Wooden urn shown in cherry finish in size medium.*

## Package includes:

- Photo Urn (cherry, dark or natural as seen on page 14)
- Engraved Nameplate
- Clay Paw Print
- Wildflower Seed Packet (seeds cover 25 sq. ft.)
- Fur Clipping

**Small (30 lbs.):** \$60  
**Medium (70 lbs.):** \$65  
**Large (200 lbs.):** \$70  
Urns can hold remains up to weight specified.



# Jewelry

*Keepsakes that hold a small amount of cremains. Chains not included unless otherwise noted. Gold jewelry is 23K gold vermeil over sterling silver.*



**Cylinder**  
Bronze: \$99  
Sterling Silver: \$159



**Filigree Cylinder**  
Sterling Silver: \$159



**Small Heart\***  
Sterling Silver: \$159  
Gold: \$169



**Teardrop**  
Sterling Silver: \$159  
Gold: \$169



**Small Cross\***  
Sterling Silver: \$139  
Gold: \$159



**Paw Print Cylinder**  
*Includes black satin cord*  
Stainless Steel: \$35



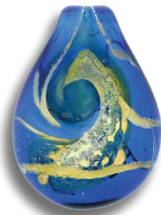
**Paw**  
Sterling Silver: \$159  
Gold: \$169



**Enamelled Pewter Satin Black Heart**  
*Includes black satin cord*  
\$99

*\*Engraving available*

## Glass — *Cremains are blown into glass.*



**Heavenly Blue Pendant**  
*More styles available online.*  
*Includes chain and cord.*  
*Loved one's name painted on back in 22K gold.*  
\$195



**Starry Night Pandora Style Bead**  
*More colors available online.*  
*Maximum number of letters, numbers and spaces is 12 per side.*  
\$149



# Buddie Jewelry and Keepsakes

*Silver pendants come with 18" chain. Pendants and bracelet are also available in 14K yellow, rose or white gold. Please call for pricing.*



**Small Nose or Paw Buddie\***  
Sterling Silver: \$185



**Large Nose or Paw Buddie\***  
Sterling Silver: \$275



**Yin Yang Buddie\***  
Sterling Silver: \$300



**Buddie Bangle Bracelet\***  
Sterling Silver: \$285



**Bronze Buddie ID/Key Tag\***  
*Each tag comes with chain, rubber lining and key ring.*  
Nose or Paw Print: \$145  
Nose & Paw Print: \$165

## Eternal Hugs



**Pet Remembrance Keepsake**  
*Contains a small chamber to hold a special memento (2½" x 3½")*  
Polyurethane Resin: \$35

*\*Engraving available*

# Metal Urns



**Classic Bronze\***



**Classic Pewter\***

## Classic Paws Collection



**Brass\***



**Radiance**

Keepsake (1 lb.): \$35  
X-Small (45 lbs.): \$69



**Going Home**

Small (85 lbs.): \$89  
Medium (140 lbs.): \$109



**Pewter\***

Heart w/stand (2 lbs.): \$69  
Petite (15 lbs.): \$69  
X-Small (30 lbs.): \$79



**Lotus Heart**

X-Small (15 lbs.): \$59  
Small (30 lbs.): \$69  
Medium (60 lbs.): \$89



**Saint Francis**  
Also available in bronze  
35 lbs.: \$99



**Arielle Heart\***  
Available in Slate and Raku with  
paw prints as shown. Available  
in Sky Blue, Night Sky and Ruby  
without paw prints.  
Heart w/stand (15 lbs.): \$99

**Urns can hold remains up to weight specified.**

*\*Engraving available for an extra fee of \$25. Engraved urns may take 7-10 days to arrive.*

## Odyssey Collection



Slate\*



Slate\*



Pewter\*



Raku\*



Raku\*



Pearlized White\*

Small (75 lbs.): \$99  
Large (200 lbs.): \$139

Heart w/stand (2 lbs.): \$69  
Petite (25 lbs.): \$79

X-Small (40 lbs.): \$89  
Small (65 lbs.): \$99

## Vault Urns



Pearl Onyx



Syrocco Cultured Marble



Ebony Cultured Marble

Small (20 lbs.): \$129  
Medium (40 lbs.): \$149

Large (80 lbs.): \$169  
X-Large (180 lbs.): \$249

Urns can hold remains up to weight specified.

*\*Engraving available for an extra fee of \$25. Engraved urns may take 7-10 days to arrive.*

# Cat Urns



*Sable*

*Black*

*Fawn*

*Tabby*

Elite Cat: \$69



*Brown*

*Black*

*Brown with Black*

Sleeping Cat: \$59



*Sable*

*Black*

*Fawn*

*Tabby*

Cozy Cat: \$69

## Wooden Urns



*Cherry*



*Natural*



*Dark*

Photo Urns

Small (30 lbs.): \$69

Medium (70 lbs.): \$79

Large (200 lbs.): \$89



Howard Miller Rosewood

250 lbs.: \$259



Black Walnut

Hand crafted from 61 individual pieces of black walnut

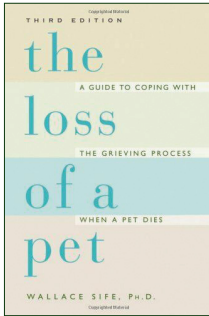
Keepsake (15 lbs.): \$300

Small (70 lbs.): \$400

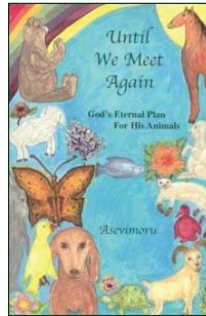
Large (200 lbs.): \$600

Urns can hold remains up to weight specified.

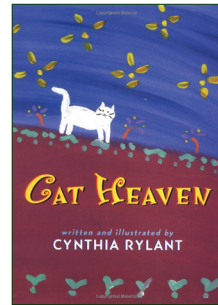
# Library for Children and Adults



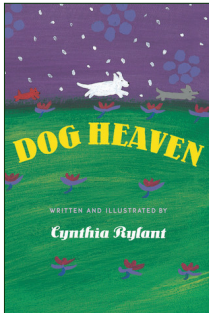
**The Loss of a Pet**  
(reading level: adult)  
**\$14.99**



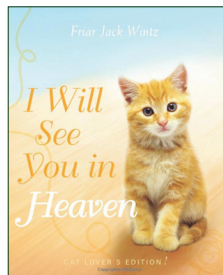
**Until We Meet Again**  
**God's Eternal Plan**  
**for His Animals**  
(reading level: children)  
**\$13.95**



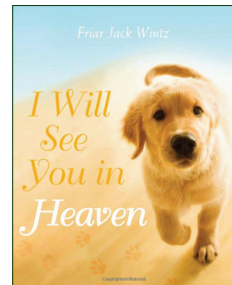
**Cat Heaven**  
(reading level: children)  
**\$16.95**



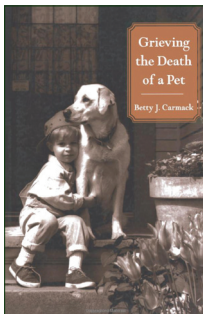
**Dog Heaven**  
(reading level: children)  
**\$16.95**



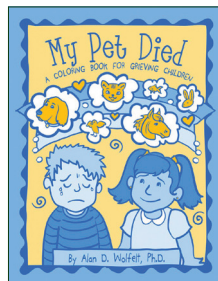
**I Will See You in Heaven [Cat]**  
(reading level: adult)  
**\$14.99**



**I Will See You in Heaven [Dog]**  
(reading level: adult)  
**\$14.99**



**Grieving the Death of a Pet**  
(reading level: adult)  
**\$15.95**



**If My Pet Died**  
**Coloring Book**  
(reading level: child)  
**\$5**



**Color the Rainbow Bridge**  
**Coloring Book**  
(reading level: child)  
**\$5**

# Two New Jersey Locations

## HAMILTON PET MEADOW

**(609) 586-9660**

1500 Klockner Road, Hamilton, NJ 08619

### Hours:

Monday thru Saturday: 9:00am – 5:00pm

Sunday: Closed

Our Hamilton facility is centrally located on 6 beautiful acres in Mercer County, NJ serving Central and South Jersey, as well as parts of Pennsylvania. We offer a memorial park that has been a tranquil resting place for pets for over 100 years. Our specially trained staff of pet bereavement counselors will personally work with you to make sure your pet is memorialized the way you wish. We also offer private viewing rooms where your family can gather to say goodbye to your cherished pet preceding a burial or attended cremation.



## CARLSTADT PET MEADOW

**(201) 262-1113**

225 Broad Street, Carlstadt, NJ 07072

### Hours:

Monday thru Friday: 9:00am – 5:00pm

Saturday: 9:00am – 3:00pm

Sunday: Closed

Our Carlstadt facility is located in Bergen County, NJ and serves northern New Jersey and the following areas in New York: the five boroughs (Manhattan, Brooklyn, Bronx, Queens and Staten Island) as well as Suffern, Westchester and Rockland Counties. We offer private viewing rooms where your family can say goodbye to your cherished pet preceding an attended cremation.



[info@petmeadow.com](mailto:info@petmeadow.com) • [petmeadow.com](http://petmeadow.com)