



# Pet Meadow

Pet Aftercare Options • Memorialization Ideas • Pet Loss Support

Complete pet funeral home services, burial and cremation



*Family owned and operated since 1998*

## The Rainbow Bridge

Just this side of heaven is a place called Rainbow Bridge.

When an animal dies that has been especially close to someone here, that pet goes to Rainbow Bridge. There are meadows and hills for all of our special friends so they can run and play together. There is plenty of food, water and sunshine, and our friends are warm and comfortable.

All the animals who had been ill and old are restored to health and vigor. Those who were hurt or maimed are made whole and strong again, just as we remember them in our dreams of days and times gone by. The animals are happy and content, except for one small thing; they each miss someone very special to them, who had to be left behind.

They all run and play together, but the day comes when one suddenly stops and looks into the distance. His bright eyes are intent. His eager body quivers. Suddenly he begins to run from the group, flying over the green grass, his legs carrying him faster and faster.

You have been spotted, and when you and your special friend finally meet, you cling together in joyous reunion, never to be parted again. The happy kisses rain upon your face; your hands again caress the beloved head, and you look once more into the trusting eyes of your pet, so long gone from your life but never absent from your heart.

Then you cross Rainbow Bridge together....

Author unknown

Pet Meadow knows that saying goodbye to a special family member can be overwhelming. Our certified pet bereavement counselors are there to sensitively support you and your pet through this difficult time. We understand your special and unique relationship with your pet and we personally work with you to create a way to best memorialize and honor your pet's life.

## Our Mission

Pet Meadow is a family-owned, leading expert in providing a comprehensive, private and compassionate pet cremation and grief support service. For 25 years, we have been trusted by leading hospital and veterinarian practices to compassionately and reliably care for your pet's dignified passage.

## Our Promise

We will treat you and your pet as we would our own family. Pet Meadow upholds the highest standards of the International Association of Pet Cemeteries and Crematories, the gold standard in professional standards and ethics in pet aftercare.



We're family owned and operated so we can provide more personal, custom care.

## Pet Loss Support

**APLB** — The APLB provides resources for pet loss support, including online chat rooms facilitated by pet bereavement counselors. Visit [www.APLB.org](http://www.APLB.org) to find out more.

**Pet Loss Partners** — If you have experienced the loss of a beloved pet, and are struggling with the loss, call (732)301-4743 or visit [PetLossPartners.com](http://PetLossPartners.com)

# What are your options?

## Private Cremation

Each pet is privately cremated so that you receive back all of your pet and only your pet.

Your pet's cremains will be returned to you in our cherry wooden urn. If you prefer, a permanent urn can be selected from our website or by visiting the urn display at our facility.



## Attended Cremation

Your presence at the time of cremation is welcome and can be scheduled by calling our office.

## Communal Cremation

Your pet is cremated simultaneously with other pets. The remains are not returned, but are gently scattered at our memorial park.

## Aquamation — A Green Alternative to Traditional Cremation

Aquamation is a gentle and natural process that is similar to a pet's body's decomposition in soil. It involves placing the body in a warm alkaline solution, which accelerates the breakdown of organic materials while preserving skeletal remains. These remains are processed and returned to the family in an urn.

## Burial

- Formal burial of your pet is available including casket and granite marker. A deed restriction and maintenance fees ensure the continuation of the cemetery. Arrangements can be made by calling our office.
- Smaller plots are available to accommodate cremains and a granite marker. This provides a permanent resting place for your pet.

## Transportation

We will gently transport your pet from your veterinarian's office or your home to our facility.

*This body has been the faithful home of a beautiful spirit. Whatever your choice for the care of you pet's body, it will be handled with respect and dignity befitting the one who lived there.*

# Memorialization Ideas

## Capture Cherished Memories

- Chronicle your pet's life in a journal or create a photo album.
- Create a drawing, sculpture or needlework project or other art.

## Make a Home Memorial

- Design a special home memorial space with your pet's picture and candle. Light the candle when you think of your pet.
- Plant a tree, bush, or garden in your pet's memory.

## Create a Keepsake – Keep Your Pet Close

- Jewelry containing your pet's lock of hair or cremains.
- An ink paw print as a charm, necklace or bracelet.
- Ask your vet or crematory to make a clay or ink paw print of your pet
- Keep your pet's collar and tags – put tags on your key ring to always have your pet with you

## Honor Your Pet

- Volunteer at a local animal shelter in memory of your pet.
- Attend our national Pet Memorial Day Candlelight Ceremony, always the 2<sup>nd</sup> Sunday in September.

*Farewell master, yet not farewell.  
Where I go, ye too, shall dwell.  
I am gone before your face.  
A moment's time, a little space.  
When ye come where I have stepped,  
ye will wonder why ye wept.*

– Edwin Arnold



# Tips for Coping with Pet Loss

*Excerpts taken from "The 10 tips on coping with the loss of a pet"  
(full version available at [petmeadow.com](http://petmeadow.com))*

## Why do I feel so much grief?

Intense grief over the loss of a pet is normal and natural. Your pet was a significant part of your life — a source of comfort and companionship, of unconditional love and acceptance, of fun and joy. People who don't understand the pet/owner bond may not understand your pain but millions of other pet owners have gone through the same feelings.

Different people experience grief in different ways. Besides your sorrow and loss, you may also experience guilt (even if it was illness or a simple accident that led to your loss), denial that your pet is really gone, anger at yourself or others who may have been involved in the loss, or even depression.

Be honest about your feelings. Someone you loved has died, and you feel alone and bereaved. Acknowledge your feelings first, then ask yourself whether the circumstances actually justify them. Locking away grief doesn't make it go away. Cry, scream, pound the floor, talk it out. Don't try to avoid grief by not thinking about your pet. Instead, reminisce about the good times.

## What should I tell my children?

You are the best judge of how much information your children can handle about death and the loss of their pet. You may find that, by being honest with them about your pet's loss, you may be able to address some fears and misperceptions they have about death. If you say the pet was "put to sleep," make sure your children understand the difference between death and ordinary sleep. Never say the pet "went away," or your child may wonder what he or she did to make it leave, and wait in anguish for its return. That also makes it harder for a child to accept a new pet. Make it clear that the pet will not come back, but that it is happy and free of pain.

Never assume a child is too young or too old to grieve. Never criticize a child for tears, or tell them to "be strong" or not to feel sad. Be honest about your own sorrow. Don't try to hide it, or children may feel required to hide their grief as well.

## Will my other pets grieve?

Pets observe every change in a household, often form strong attachments to one another and are bound to notice the absence of a companion. You may need to give your surviving pets a lot of extra attention and love to help them through this period. Remember that, if you are going to introduce a new pet, your surviving pets may not accept the newcomer right away, but new bonds will grow in time.

## Should I get a new pet right away?

Generally, the answer is no. One needs time to work through grief and loss before building a relationship with a new pet. If your emotions are still in turmoil, you may resent a new pet for trying to "take the place" of the old. Children in particular may feel that loving a new pet is "disloyal" to the previous pet.

When you do get a new pet, avoid getting a "look-alike" pet, which makes comparisons all the more likely. Don't expect your new pet to be "just like" the one you lost. Never give a new pet the same name or nickname as the old, and allow it to develop its own personality.

A new pet should be acquired because you are ready to move forward and build a new relationship, rather than looking backward and mourning your loss. When you are ready, select an animal with whom you can build another long, loving relationship because this is what having a pet is all about!

## Other Resources

### Pet Decisions

Benefit from Dr. Susan P. Cohen's 33 years of experience as a social worker who specializes in the special relationship between people and pets. [www.petdecisions.com](http://www.petdecisions.com)

### Pet-Loss.net

Provides lists of pet loss support groups and counselors for each state along with articles and reading lists.





# Forever Remembered Packages

# Cat Urns

**IMPORTANT: If you have a time-sensitive/urgent request, please email [orders@petmeadow.com](mailto:orders@petmeadow.com) with URGENT in the subject line.**

**Only available through Pet Meadow!**

**Package includes:**

- Photo Urn (cherry, dark or natural as seen below)
- Engraved Nameplate
- Clay Paw Print
- Wildflower Seed Packet (seeds cover 25 sq. ft.)
- Fur Clipping



- Small (30 lbs.):** \$95 (value \$143)
- Medium (70 lbs.):** \$105 (value \$153)
- Large (200 lbs.):** \$115 (value \$163)

*Wooden urn shown in cherry finish in size medium.*

Urns can hold remains up to weight specified.



*Cherry*

*Natural*

*Dark*

**Wooden Photo Urns**

Small (30 lbs.): \$79    Medium (70 lbs.): \$89    Large (200 lbs.): \$99

Urns can hold remains up to weight specified.



*Sable*

*Black*

*Fawn*

*Tabby*

*Brown*

*Black*

Elite Cat: \$119

Brown with Black

Sleeping Cat: \$99



*Sable*

*Black*

*Fawn*

*Tabby*

Cozy Cat: \$119

## Green Options



**Let Your Love Grow**

Mix with cremains for remembrance planting to create a living memorial

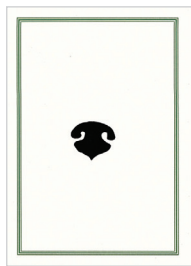
- Small (up to 30 lbs.): \$80
- Medium (up to 75 lbs.): \$90
- Large (up to 125 lbs.): \$110



**Precious Paws Scattering Tube**  
An eco-friendly, easy-to-use urn suitable for scattering ashes, burial, or as a keepsake.

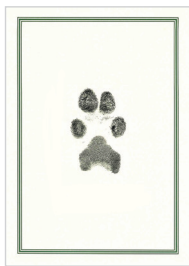
- Small: 3 x 5.5
  - Medium: 3 x 8.5
  - Large: 4 x 10
  - X-Large: 5 x 14.5
- All sizes: \$40

# Paw Prints and Memorial Products



Everlasting Nose or Paw Print\*  
(5" x 7")  
\$35

*Digitally captured and printed on cardstock*



Basic Ink Nose or Paw Print\*  
(5" x 7")  
\$49



Framed Ink Paw Print with Personalized Plaque\*  
\$95



Nose Print Pendant

Silver: \$130  
Gold filled: \$160

*Cast from a mold of your pet's nose. Includes 18" chain.*



Photo Display Clay Paw Print\*  
\$49



Wooden Ornament  
(3.5" - 4" in diam.)  
Single imprint: \$69, with stand \$79  
Double imprint: \$79, with stand \$89



Personalized Blanket  
(approx. 6' x 4.5')  
*Pet photo required*  
\$149



Memorial Plaque: \$125



River Rocks  
Small: \$99  
Medium: \$149  
Large: \$229  
X-Large: \$299  
*Visit our website for engraving limitations.*

*\* Paper, frame, or kit provided may vary*

# Jewelry and Keepsakes

## Legacy Touch

*Please contact Pet Meadow to order these items.*

Hamilton: (609) 586-9660

Carlstadt: (201) 262-1113

Or via email:

orders@petmeadow.com



Dog Tag

Pendant



## Oval Signet Ring

*Engraved with your pet's nose or paw print, with optional compartment to hold a small amount of cremains.*

Without compartment: \$240.00

With compartment: \$300.00



## Paw & Nose Print Keychains

*Available with nose print, paw print or both.*

Single imprint: \$60 Double imprint: \$85

Wooden Keychain



Faux Leather Keychain

*Available in Chestnut and Buckskin*



Chestnut

Buckskin



Buster



Buster

*These keepsakes are engraved with the actual paw or nose print of your pet and include your pet's name engraved on back in Block or Script. Visit our website for more options.*



# Metal Urns



Classic Bronze\*



Classic Pewter\*

## Classic Paws Collection



Brass\*



Slate\*

## Odyssey Collection



Slate\*



Pewter\*



Radiance

Keepsake (1 lb.): \$69  
X-Small (45 lbs.): \$129



Going Home

Small (85 lbs.): \$149  
Large (200 lbs.): \$199



Pewter\*

Heart w/stand (2 lbs.): \$129  
Petite (15 lbs.): \$129  
X-Small (30 lbs.): \$139



Raku\*

Small (75 lbs.): \$159  
Large (200 lbs.): \$199



Raku\*

Heart w/stand (2 lbs.): \$129  
Petite (25 lbs.): \$139



Pearlized White\*

X-Small (40 lbs.): \$149  
Small (65 lbs.): \$159



Lotus Heart

X-Small (15 lbs.): \$119  
Small (30 lbs.): \$129  
Medium (60 lbs.): \$149



Saint Francis

Available in bronze or pewter  
35 lbs.: \$149



Arielle Heart\*

Available in Slate and Raku with paw prints as shown. Available in Sky Blue, Night Sky and Ruby without paw prints.

Heart w/stand (15 lbs.): \$169

## Vault Urns



Pearl Onyx



Syrocco Cultured Marble

Medium (40 lbs.): \$199  
Large (80 lbs.): \$219  
X-Large (180 lbs.): \$299



Ebony Cultured Marble

Urns can hold remains up to weight specified.

\*Engraving available for an extra fee of \$35. Engraved urns may take 7-10 days to arrive.

Urns can hold remains up to weight specified.

\*Engraving available for an extra fee of \$35. Engraved urns may take 7-10 days to arrive.

Keepsakes that hold a small amount of cremains. Chains not included unless otherwise noted. Gold jewelry is 23K gold vermeil over sterling silver.



**Cylinder**  
Bronze: \$129  
Sterling Silver: \$199



**Filigree Cylinder**  
Sterling Silver: \$199



**Small Heart\***  
Sterling Silver: \$199  
Gold Vermeil: \$209



**Teardrop**  
Sterling Silver: \$199  
Gold Vermeil: \$209



**Pyramid\***  
Sterling Silver: \$199  
Gold Vermeil: \$209



**Paw Print Cylinder**  
Includes black satin cord  
Stainless Steel: \$50



**Paw**  
Sterling Silver: \$199  
Gold Vermeil: \$209



**Enameled Pewter Satin Black Heart**  
Includes black satin cord.  
Also available in red.  
\$129

\*Engraving available for \$35

## Rings — Cremains are mixed with inlay stones



**Amethyst**



**Abalone**



**Tiger Eye**



**Silver Flake**



**Blue Opal**



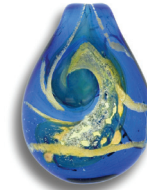
**White Opal**

Stainless Steel: Blue & White Opals: \$150 All Others: \$190  
Argentium (.96 Silver): Blue & White Opals: \$190 All Others: \$225

Blue and White Opal rings shown in Argentium, all others shown in Stainless Steel

Available in 6mm and 8mm widths in US sizes 5-15, including half sizes. **Because the rings are made with resin, the ring cannot be resized once it is made. Please be sure of your ring size.**

Cremains are blown into glass.



**Heavenly Blue Pendant**



**Heart Pendant**



**Italian Horn Pendant**



**Havana Moon Pendant**



**Lilac Pandora-Style Bead**

More colors and styles available online.  
Pendant includes chain and cord. Loved one's name painted on back in 22K gold.

\$195

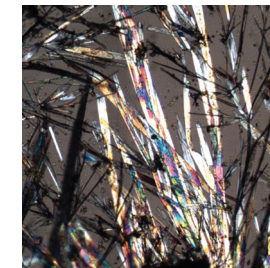
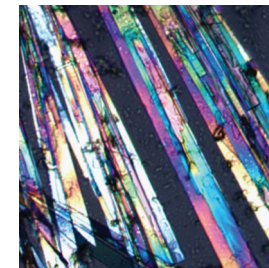
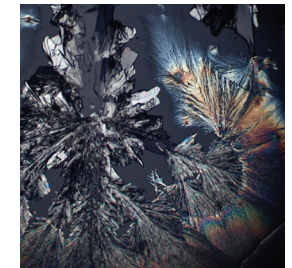
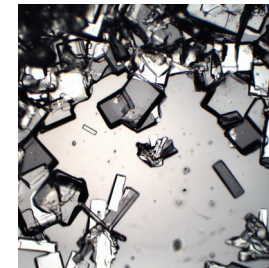
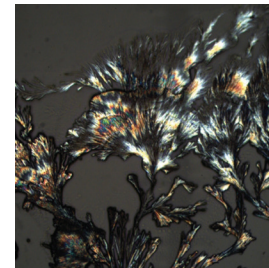
More colors online.

Max. number of letters, numbers and spaces is 12 per side.

\$149

## Ashes to Art — A beautiful and unique memorial for your beloved pet

Microscopic crystals unique to your pet's chemistry are created from a small amount of your pet's cremains. These crystals are digitally captured by our microscope photography specialist to create high-resolution images. You will receive an email with 5 different images. Choose your favorite image to be printed on a 12" x 12" metal canvas. You may purchase additional images. \$249





# Two New Jersey Locations

## HAMILTON PET MEADOW

**(609) 586-9660**

1500 Klockner Road, Hamilton, NJ 08619

### Hours:

Monday thru Saturday: 9:00AM – 5:00PM

Sunday: 9:00AM – 1:00PM

Our Hamilton facility is centrally located on 6 beautiful acres in Mercer County, NJ serving Central and South Jersey, as well as parts of Pennsylvania. We offer a memorial park that has been a tranquil resting place for pets for over 100 years. Our specially trained staff of pet bereavement counselors will personally work with you to make sure your pet is memorialized the way you wish. We also offer private viewing rooms where your family can gather to say goodbye to your cherished pet preceding a burial or attended cremation.



## CARLSTADT PET MEADOW

**(201) 262-1113**

225 Broad Street, Carlstadt, NJ 07072

### Hours:

Monday thru Friday: 9:00AM – 5:00PM

Saturday: 9:00AM – 3:00PM

Sunday: Closed

Our Carlstadt facility is located in Bergen County, NJ and serves northern New Jersey and the following areas in New York: the five boroughs (Manhattan, Brooklyn, Bronx, Queens and Staten Island) as well as Suffern, Westchester and Rockland Counties. We offer private viewing rooms where your family can say goodbye to your cherished pet preceding an attended cremation.



Please visit us online



[info@petmeadow.com](mailto:info@petmeadow.com) • [petmeadow.com](http://petmeadow.com)