



Pet Meadow

Pet Aftercare Options • Memorialization Ideas • Pet Loss Support

Complete pet funeral home services and cremation



Family owned and operated since 1998



The Rainbow Bridge

Just this side of heaven is a place called Rainbow Bridge.

When an animal dies that has been especially close to someone here, that pet goes to Rainbow Bridge. There are meadows and hills for all of our special friends so they can run and play together. There is plenty of food, water and sunshine, and our friends are warm and comfortable.

All the animals who had been ill and old are restored to health and vigor. Those who were hurt or maimed are made whole and strong again, just as we remember them in our dreams of days and times gone by. The animals are happy and content, except for one small thing; they each miss someone very special to them, who had to be left behind.

They all run and play together, but the day comes when one suddenly stops and looks into the distance. His bright eyes are intent. His eager body quivers. Suddenly he begins to run from the group, flying over the green grass, his legs carrying him faster and faster.

You have been spotted, and when you and your special friend finally meet, you cling together in joyous reunion, never to be parted again. The happy kisses rain upon your face; your hands again caress the beloved head, and you look once more into the trusting eyes of your pet, so long gone from your life but never absent from your heart.

Then you cross Rainbow Bridge together....

Author unknown

Pet Meadow knows that saying goodbye to a special family member can be overwhelming. Our certified pet bereavement counselors are there to sensitively support you and your pet through this difficult time. We understand your special and unique relationship with your pet and we personally work with you to create a way to best memorialize and honor your pet's life.



Our Mission

We believe pets are members of the family. We deliver peace of mind through accurate, transparent, and reliable cremation services for veterinary hospitals and pet parents.

Our Promise

We will treat you and your pet as we would our own family. Pet Meadow upholds the highest standards of the International Association of Pet Cemeteries and Crematories, the gold standard in professional standards and ethics in pet aftercare.

We're family owned and operated so we can provide more personal, custom care.

Pet Loss Support

APLB — The APLB provides resources for pet loss support, including online chat rooms facilitated by pet bereavement counselors. Visit www.APLB.org to find out more.

Pet Loss Partners — If you have experienced the loss of a beloved pet, and are struggling with the loss, call (732)301-4743 or visit PetLossPartners.com

Aftercare Options

Private Cremation

Each pet is privately cremated so that you receive back all of your pet and only your pet.

Your pet's cremains will be returned to you in our cherry wooden urn. If you prefer, a permanent urn can be selected from our website or by visiting the urn display at our facility.



Attended Cremation

Your presence at the time of cremation is welcome and can be scheduled by calling our office.

Communal Cremation

Your pet is cremated simultaneously with other pets. The remains are not returned, but are gently scattered at our memorial park.

Aquamation — A Green Alternative to Traditional Cremation

Aquamation is a gentle and natural process that is similar to a pet's body's decomposition in soil. It involves placing the body in a warm alkaline solution, which accelerates the breakdown of organic materials. The remains are processed and returned to your family in an urn.

Burial

- Formal burial of your pet is available including casket and granite marker. A deed restriction and maintenance fees ensure the continuation of the cemetery. Arrangements can be made by calling our office.
- Smaller plots are available to accommodate cremains and a granite marker. This provides a permanent resting place for your pet.

Transportation

We will gently transport your pet from your veterinarian's office or your home to our facility.

This body has been the faithful home of a beautiful spirit. Whatever your choice for the care of you pet's body, it will be handled with respect and dignity befitting the one who lived there.

Memorialization Ideas

Capture Cherished Memories

- Chronicle your pet's life in a journal or create a photo album.
- Create a drawing, sculpture or needlework project or other art.

Make a Home Memorial

- Design a special home memorial space with your pet's picture and candle. Light the candle when you think of your pet.
- Plant a tree, bush, or garden in your pet's memory.

Create a Keepsake – Keep Your Pet Close

- Jewelry containing your pet's lock of hair or cremains.
- An ink paw print as a charm, necklace or bracelet.
- Ask your vet or crematory to make a clay or ink paw print of your pet
- Keep your pet's collar and tags – put tags on your key ring to always have your pet with you

Honor Your Pet

- Volunteer at a local animal shelter in memory of your pet.
- Attend our national Pet Memorial Day Candlelight Ceremony, always the 2nd Sunday in September.

Farewell master, yet not farewell.

Where I go, ye too, shall dwell.

I am gone before your face.

A moment's time, a little space.

*When ye come where I have stepped,
ye will wonder why ye wept.*

– Edwin Arnold



Tips for Coping with Pet Loss

Excerpts taken from “The 10 tips on coping with the loss of a pet” (full version available at petmeadowtexas.com)

Why do I feel so much grief?

Intense grief over the loss of a pet is normal and natural. Your pet was a significant part of your life — a source of comfort and companionship, of unconditional love and acceptance, of fun and joy. People who don't understand the pet/owner bond may not understand your pain but millions of other pet owners have gone through the same feelings.

Different people experience grief in different ways. Besides your sorrow and loss, you may also experience guilt (even if it was illness or a simple accident that led to your loss), denial that your pet is really gone, anger at yourself or others who may have been involved in the loss, or even depression.

Be honest about your feelings. Someone you loved has died, and you feel alone and bereaved. Acknowledge your feelings first, then ask yourself whether the circumstances actually justify them. Locking away grief doesn't make it go away. Cry, scream, pound the floor, talk it out. Don't try to avoid grief by not thinking about your pet. Instead, reminisce about the good times.

What should I tell my children?

You are the best judge of how much information your children can handle about death and the loss of their pet. You may find that, by being honest with them about your pet's loss, you may be able to address some fears and misperceptions they have about death. If you say the pet was “put to sleep,” make sure your children understand the difference between death and ordinary sleep. Never say the pet “went away,” or your child may wonder what he or she did to make it leave, and wait in anguish for its return. That also makes it harder for a child to accept a new pet. Make it clear that the pet will not come back, but that it is happy and free of pain.

Never assume a child is too young or too old to grieve. Never criticize a child for tears, or tell them to “be strong” or not to feel sad. Be honest about your own sorrow. Don't try to hide it, or children may feel required to hide their grief as well.

Will my other pets grieve?

Pets observe every change in a household, often form strong attachments to one another and are bound to notice the absence of a companion. You may need to give your surviving pets a lot of extra attention and love to help them through this period. Remember that, if you are going to introduce a new pet, your surviving pets may not accept the newcomer right away, but new bonds will grow in time.

Should I get a new pet right away?

Generally, the answer is no. One needs time to work through grief and loss before building a relationship with a new pet. If your emotions are still in turmoil, you may resent a new pet for trying to “take the place” of the old. Children in particular may feel that loving a new pet is “disloyal” to the previous pet.

When you do get a new pet, avoid getting a “look-alike” pet, which makes comparisons all the more likely. Don't expect your new pet to be “just like” the one you lost. Never give a new pet the same name or nickname as the old, and allow it to develop its own personality.

A new pet should be acquired because you are ready to move forward and build a new relationship, rather than looking backward and mourning your loss. When you are ready, select an animal with whom you can build another long, loving relationship because this is what having a pet is all about!

Other Resources

Pet Decisions

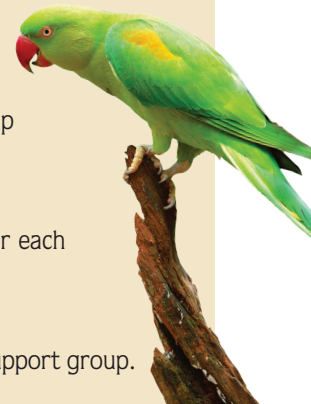
Benefit from Dr. Susan P. Cohen's 43 years of experience as a social worker who specializes in the special relationship between people and pets. petdecisions.com

Pet-Loss.net

Provides lists of pet loss support groups and counselors for each state along with articles and reading lists.

Pet Loss Support Services

Please see our website for our monthly on-going pet loss support group.



Paw Prints and Keepsakes



Memorial Plaque: \$125



Photo Display Clay Paw Print
\$49



Framed Ink Paw Print
with Personalized Plaque*
\$95



Faux Leather Keychain*
Shown in Buckskin

Available with nose print,
paw print or both.
Single imprint: \$60
Double imprint: \$85

Wooden Keychain*



*These keepsakes are engraved with the actual paw
or nose print of your pet and includes your pet's
name engraved on back in Block or Script.



Nose Print Pendant
Cast from a mold of your pet's
nose. Includes 18" chain.
Silver: \$130; Gold filled: \$160

Scan for all paw
prints & keepsakes



Ornament*
(3.5" - 4" in diam.)
Single imprint: \$69
Double imprint: \$79
Stand: \$10

Forever Remembered Package

A personalized package to offer
comfort in a time of grief.

Package includes:

- Photo Urn (cherry shown), dark or natural
- Engraved Nameplate
- Clay Paw Print
- Wildflower Seed Packet (covers 25 sq. ft.)
- Fur Clipping

Small (30 lbs.)
Medium (70 lbs.) All sizes: \$64
Large (200 lbs.)

Urn can hold remains up to weight specified.



Scan for Forever
Remembered Package



Jewelry

Pendants that hold a small amount of cremains. Chains not included unless
otherwise noted. Gold jewelry is 23K gold vermeil over sterling silver.



Small Heart*
Sterling Silver: \$199
Gold Vermeil: \$209



Small Cross*
Sterling Silver: \$199
Gold Vermeil: \$209



Paw Print Cylinder
in Stainless Steel
Includes black satin cord



Paw
Sterling Silver: \$199
Gold Vermeil: \$209

Rings — Cremains are mixed with inlay stones



Blue Opal



White Opal



Tiger Eye



Amethyst

Stainless Steel: Available in 6mm and 8mm widths
Blue & White Opals: \$150; All Others: \$190

Argentium: Available in 8mm width only
Blue & White Opals: \$150; All Others: \$190

Available in US sizes 5-15, including half sizes. *Because the
rings are made with resin, the ring cannot be resized
once it is made. Please be sure of your ring size.*

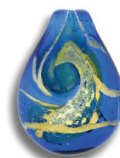


Oval Signet Ring
Without compartment: \$240
With compartment: \$300
Engraved with your pet's nose or paw
print, with optional compartment to
hold a small amount of cremains.

Scan for
all jewelry
options



Forever in Glass — Cremains are blown into glass.



Heavenly Blue
Pendant



Heart Pendant



Italian Horn
Pendant



Havana Moon
Pendant



Pandora-Style Bead
Shown in lilac, more
colors online.

More colors and styles available online. Pendant includes chain and cord.
Loved one's name painted on back in 22K gold.
\$195

*Engraving available for an additional \$35

Max. number of letters,
numbers and spaces is
12 per side.

\$149

Urns

Wooden Urns



Photo Urns

Shown in Dark Finish, also available in Cherry and Natural

Small (30 lbs.)
Medium (70 lbs.) All sizes: \$64
Large (200 lbs.)

Also available as part of the Forever Remembered Package. See page 8 for details.

Scan for all urn options



Metal Urns



Arielle Heart*

Available in Slate, Raku and Pink with paw prints, as shown.
Available in Sky Blue, Night Sky and Ruby without paw prints.
Heart w/stand (15 lbs.): \$169



Odyssey Collection*

Shown in Raku
Also available in Slate, Pewter and Pearlized White

Heart w/stand (2 lbs.): \$129
Petite (25 lbs.): \$139
X-Small (40 lbs.): \$149
Small (65 lbs.): \$159



Classic Paws Collection*

Shown in Slate
Also available in Brass, Raku, and Pewter

Heart w/stand (2 lbs.): \$129
Petite (15 lbs.): \$129
X-Small (30 lbs.): \$139
Small (75 lbs.): \$159
Large (200 lbs.): \$199

Vault Urns



Pearl Onyx

Also available in Syrocco and Ebony Cultured Marble

Medium (50 lbs.): \$199
Large (80 lbs.): \$219
X-Large (180 lbs.): \$299

Cat Urns

Cozy Cat

Shown in Sable
Also available in Black, Fawn and Tabby
\$119



Sleeping Cat

Shown in Colourpoint
Also available in Brown and Black
\$99

Green Options



Let Your Love Grow

Mix with cremains for remembrance planting to create a living memorial

Small (up to 30 lbs.): \$80
Medium (up to 75 lbs.): \$90
Large (up to 125 lbs.): \$110



Scan for all green options

Precious Paws Scattering Tube

An eco-friendly, easy-to-use urn suitable for scattering ashes, burial, or as a keepsake.

Small: 3 x 5.5
Medium: 3 x 8.5
Large: 4 x 10
X-Large: 5 x 14.5
All sizes: \$40



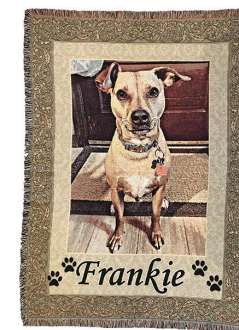
Special Tributes



River Rocks

Small: \$99
Medium: \$149
Large: \$229
X-Large: \$299

Visit our website for engraving limitations.



Personalized Blanket (approx. 6' x 4.5')
Pet photo required
\$149



Custom Hand-Painted Watercolor Pet Portrait

11" x 14" painted on archival paper
Pet photo required
\$250

Scan for all paw prints & keepsake options



Urns can hold remains up to weight specified.

*Engraving available for an extra fee. Engraved urns may take 7-10 days to arrive.

Three Northeast Locations



HAMILTON, NJ

(609) 586-9660

1500 Klockner Road
Hamilton, NJ 08619

Hours:

Monday thru Saturday:

9:00AM – 5:00PM

Sunday: 9:00AM – 1:00PM



CARLSTADT, NJ

(201) 262-1113

225 Broad Street
Carlstadt, NJ 07072

Hours:

Monday thru Friday:

9:00AM – 5:00PM

Saturday: 9:00AM – 1:00PM

Sunday: Closed



ROCKVILLE, MD

(301) 920-PETS

11776 Parklawn Drive
Rockville, MD 20852

Hours:

Please visit our website for
current office hours.



Please visit us online



info@petmeadow.com • petmeadow.com